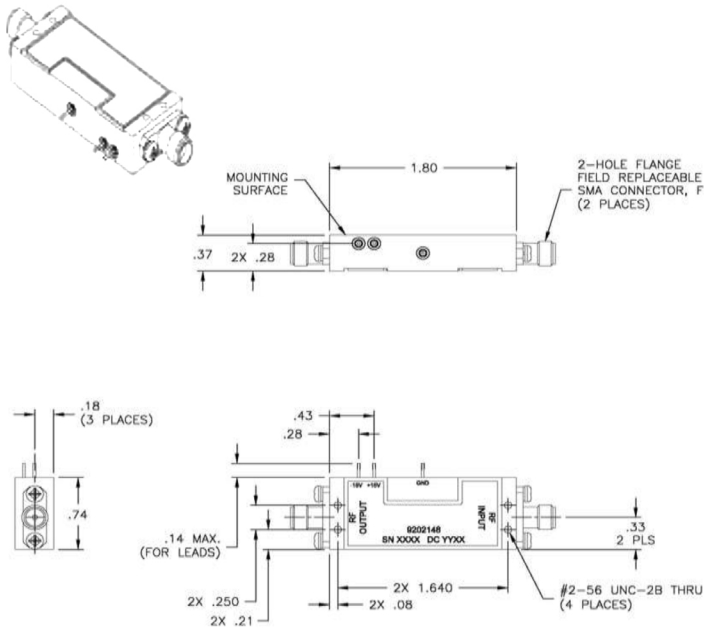


Model 9202148 Broadband Amplifier



Electrical Specifications

Frequency Range	2 to 20 GHz
Output Power @ P1dB (Minimum)	+25 dBm
Saturated Power (Minimum)	28 dBm
Gain (Minimum)	24 dB
Input VSWR (Maximum)	2:1
Output VSWR (Maximum)	2:1
Noise Figure (Maximum)	
2-3 GHz	5 dB
3-5 GHz	4 dB
5-15 GHz	3.25 dB
15-20 GHz	4 dB

General Specifications

Connectors	
RF	SMA-F
Bias	Solder Pin
DC Power Requirements	
Positive Supply Voltage	+15 +/- 5% Vdc
Positive Supply Current (Max)	900 mA
Negative Supply Voltage	-15 +/- 5% Vdc
Negative Supply Current (Max)	50 mA
Temperature	
Operating	-25 to +50 °C
Storage	-55 to +125 °C
Dimensions	Refer to outline drawing

Notes

Note that the recommended cooling mechanism is conduction through the surface of the amplifier. Proper heat sinking is required.

